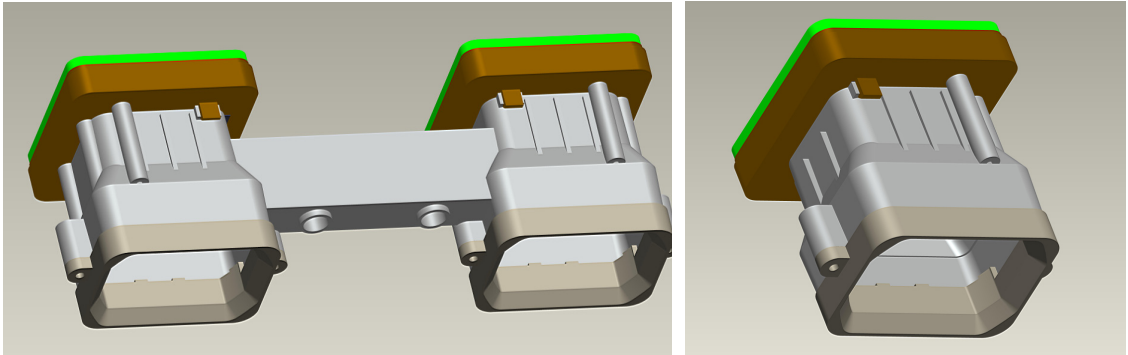

Mono/Bin ocular

P130X-001-RM & RB



This optics is to help customers accelerate OLED micro display based product development and design. It is suitable for 0.5" OLED microdisplays with SVGA pixels. The product can be easily applied to the customer's product development and design. This ocular is mainly used in night-vision device helmets display products such as applications.

Feature

-- Optical

Field of view (FOV): 33°
Exit Relief: 20mm
Exit Pupil: 10mm
Interpupillary Distance (IPD): 63.5mm
Magnification: 13X
Lens Material: Resin
Seal level: unsealing

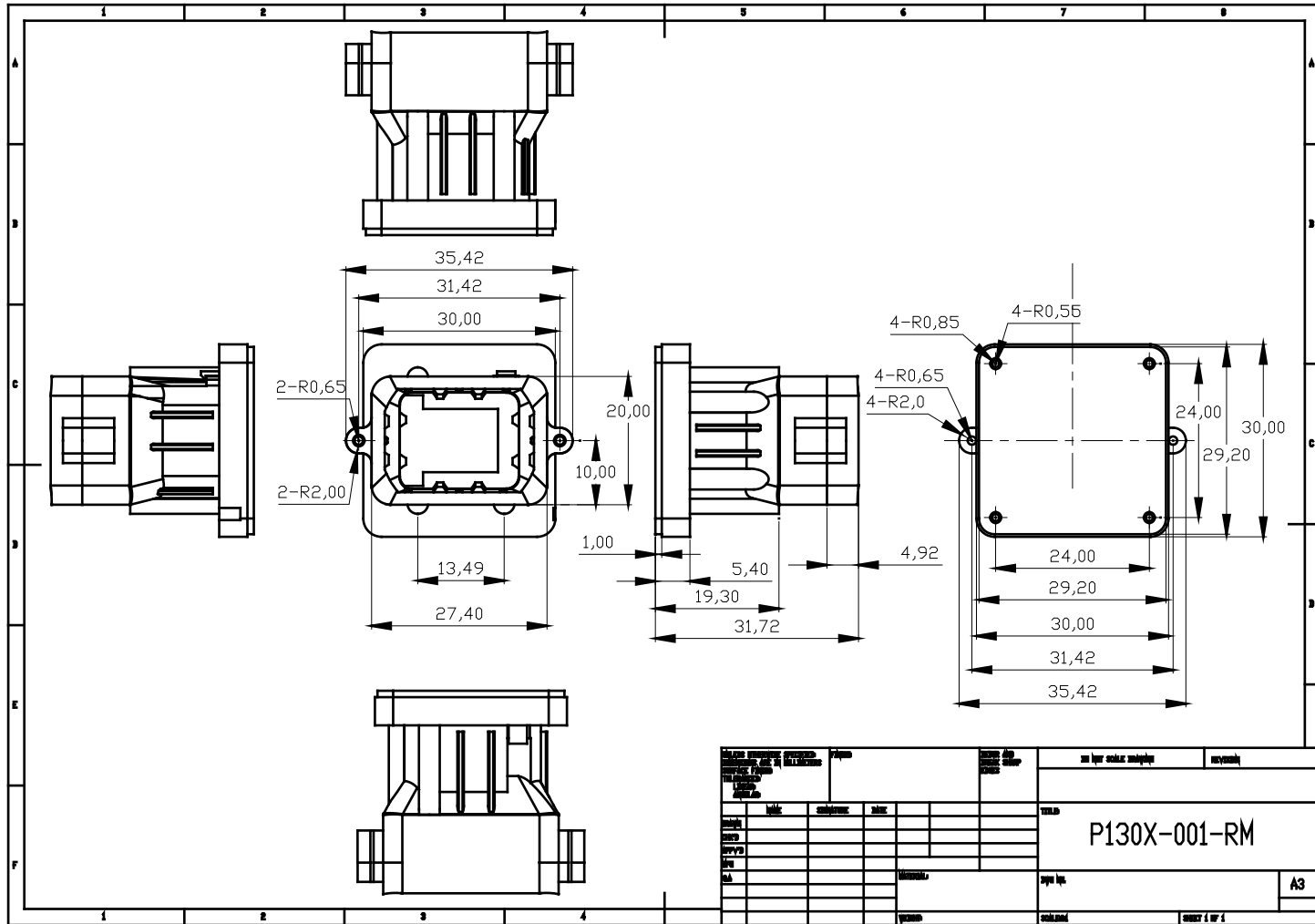
-- Sizes

98.92 mm (l) x 30.00 mm (h) x 30.00 mm (d) (bin-ocular)
30.00mm (l) x 30.00 mm (h) x 30.00 mm (d) (mono-ocular)

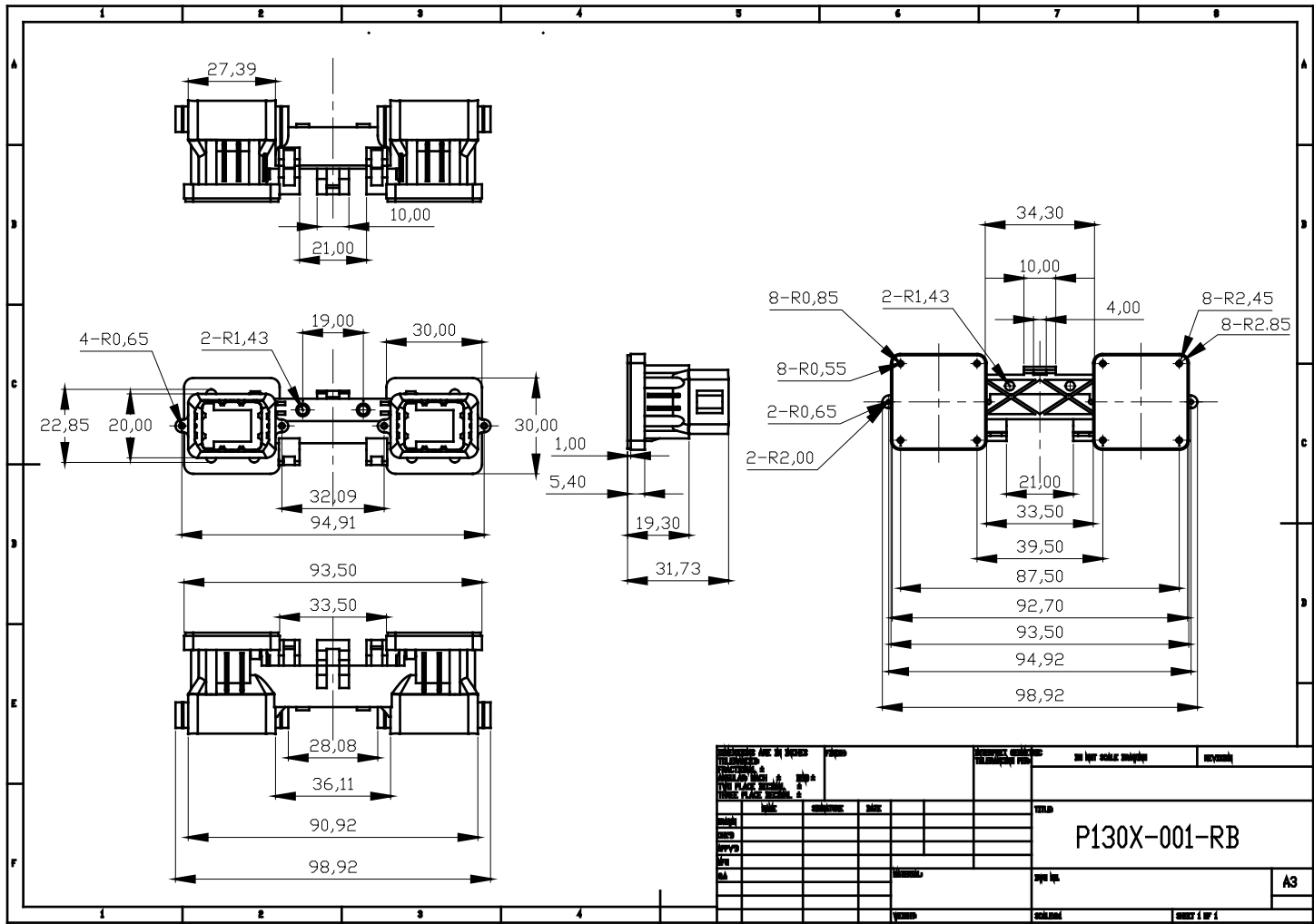
-- Weight

40g(bin-ocular)/20g(mono-ocular)

-- Dimmensions



DESIGN: DRAWING NO: DATE: SCALE:		TITLE: P130X-001-RM	
MATERIAL:		SHEET NO: A3	
DRAWN BY:		CHECKED BY:	
APPROVED BY:		DATE:	



Nome do Projeto: Nome do Cliente: Data: Folha: Total:		Nome do Produto: Descrição: Quantidade: Valor:		Nome do Engenheiro: Nome do Desenhador: Data: Folha: Total:	
P130X-001-RB		A3		SHEET 1 OF 1	